



ParkEyes
Total Parking Control



INDEX

1 / CAMERA UNIT PE3	4
2 / SERVER AND DATABASE	6
3 / LOCATE YOUR CAR KIOSK	8
4 / WIRING	10
5 / COMMUNICATIONS NETWORK	12
6 / CONDUIT / CABLE TRAY	14
7 / POWER SUPPLY CABINET	16
8 / INDOOR SIGNALING LED DISPLAY	18
9 / OUTDOOR LED DISPLAY DIRECTORY	20

ParkEyes
Total Parking Control

ICONOGRAPHY



RESOLUTION



PROTOCOL



IP



WEIGHT



DIMENSIONS



NETWORK



RGB LED



RED/GREEN LED



IMPACT RESISTANCE



CONNECTORS



VISION ANGLE



ATTACHED TO FLOOR



WORKING TEMPERATURE



COMMUNICATION INTERFACE



MEMORY



POWER SUPPLY



MAXIMUM POWER



LOW POWER



POWER DRAW



PLUG & PLAY



CHARACTER HEIGHT



CPU



FORMAT



DATA BASE



BROADBAND SPEED



LENGTH OF WIRES



COLOR



VOLTAGE



IMAGE SENSOR



RESISTANCE



CAMERA UNIT PE3

All in one unit with one or two IP Low Lux cameras and led integrated. Each camera can control until 2 spaces (4 spaces for unit with 2 cameras). The led will be green while one or more spaces are available and red when all controlled spaces are occupied.

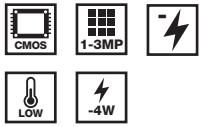
Stand alone unit with internal processor for space occupancy detection.

Unique video-based guidance system with **real time video surveillance** and video recording of all cameras at the same time.

Low Light camera sensor for high quality images and **the best LPR reliability** even in bad illuminated car parks.

SPECIFICATIONS

CAMERAS SPECIFICATION



Processor	Embedded ARM Cortex processor
Image sensor	CMOS
Resolution	1.0 to 3.0 Megapixels depending of car parks best fit
Sensitivity	Low Lux camera sensor customized for most of car parks light environments and tuned to reach high quality images for License Plate Recognition, Parking Guidance Solution algorithms and superb video surveillance
Low temperature	Working mode protects the camera against overheating and ensures high reliability and high lifespan
Low power consumption	Less than 4W for whole unit
Video protocols	H.264 and special low band width protocol

LED INDICATOR



Technology	RGB Leds
Special functions	Led indicator with flashing in one or more colors to indicate alerts or special states (vehicle parked in reserved space, wrong parked, etc)
Vision angle	360°

INTERFACES



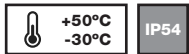
Connectors	One and only RJ45 Standard connectors. No more connectors needed
Protocol	TCP/IP

POWER



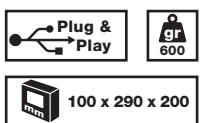
Power supply	PoE (Power Over Ethernet)
Power consumption	5W maximum
Certificates	UL, CE

ENVIRONMENT



Working temperature	-30°C to +50°C (-22°F to +122°F)
IP rating	IP54 rated (against water and dust)

MECHANICAL



Mounting	Easy Plug and Play installation over conduit
Material	Polycarbonate / ABS plastic
Dimensions (Height, Width, Depth)	100 mm (3.9"), 290 mm (11.4"), 200 mm (7.8")
Weight	0.6 kg (1.32 lbs)

PART NUMBER
PE.CAM.3



SERVER AND DATABASE

High performance server to control all ParkEyes system. Superb processing power **able to run sophisticated Artificial Intelligence Algorithms**. Able to display in real time images from all ParkEyes cameras on the project.

Rack mount server gathering information, transactions and images from all ParkEyes cameras and devices.

Controlling Led displays and communications with other systems such as: Locate your Car system, PMS/ PARCS system, outdoor sensors, etc.

High storage capacity for video recording.



SPECIFICATIONS

HARDWARE



CPU Hexa Core Processor

RAM 32GB DDR3



Network Gigabit Ethernet

Power supply Platinum (7 YEARS OF WARRANTY)



Format Rack 19". 4U Height. Color: Black

Storage In solid state drives SSD

Storing capacity for Data One year minimum, more capacity optional

Storing capacity for Images According to the customer's storage needs

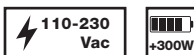
SOFTWARE



Operating system Windows 7 Professional 64BIT

Database Microsoft SQL Server

POWER



Power supply 110-230Vac

Power consumption 300W maximum

PART NUMBER
PE.SER



LOCATE YOUR CAR KIOSK

Touch screen information point kiosk to Locate Your Car easily by typing the plate on the screen. The kiosk will show the car image in real time, the exact position in the parking lot and the way to find the car.

Unique 3D info graphic allowing 3D imaging of the parking lot map.

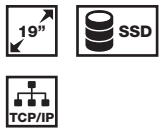
Real time video of the car is displayed.

Optional embedded modules as Mifare card reader and barcode tickets reader to speed up car location.

Allows fully integration with third party Kiosks, Information points or Pay on Foot Machines.

SPECIFICATIONS

HARDWARE



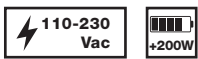
Screen	LCD 19" 16:9 Wide DVI touch screen. GloTouch
Embedded computer	2.9ghz
Disk	With SSD disk (Solid State Disk)
Communication port	TCP/IP
UPS	UPS 400va included
Optional	Mifare / Wireless card reader module, barcode ticket reader module

SOFTWARE



Operating System	Windows 7
------------------	-----------

POWER



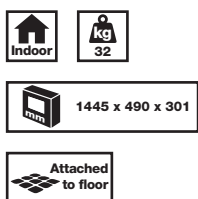
Power supply	110-230Vac.
Power consumption	200W maximum

ENVIRONMENT

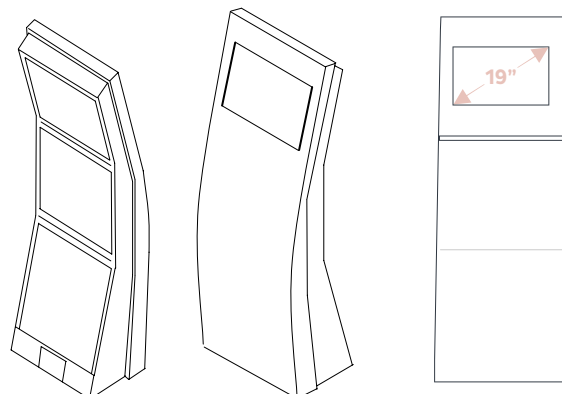


Working temperature	0-50°C
Protections	Ruggedized computer
Ventilation	Fan less

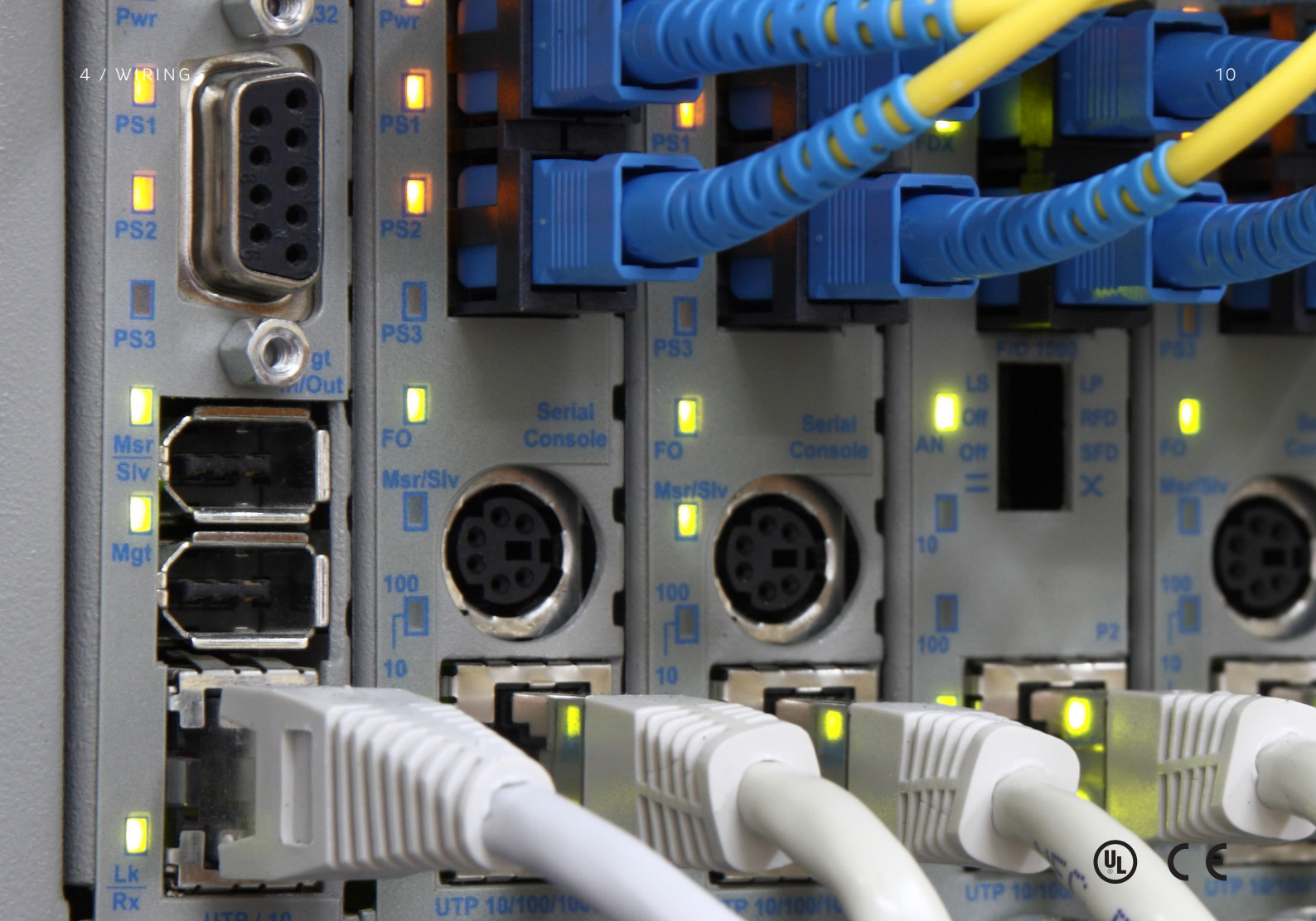
MECHANICAL



Design	Designed for indoor use only
Motorized parts	No mechanical / motorized parts
Case protection	Anti vandalism. Made of powder coated steel
Access Doors	Three rear doors giving easy maintenance access
Dimensions	1445 mm (56.9"), 490 mm (19.3"), 301 mm (11.85")
Weight	32 Kg
Mounting	Attached to floor



PART NUMBER
PE.PI



WIRING

ParkEyes uses high quality data and power cables: 100% copper, LSZH and high conductivity.

ParkEyes cables have plug&play connectors for easy and fast installation.

No metal alloy used, only 100% copper to guarantee best performance.

All cables using LSZH directives, ensuring high safety in public spaces such as car parks (Halogen free and no flame spread).



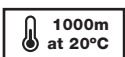
SPECIFICATIONS

DATA CABLE



Conductive material	100% polished copper Class 5
Type	UTP Cat5e
Gauge	24AWG
Insulation material	LSZH (Low Smoke Zero Halogen, Halogen free)
Resistance	8.9 ohms / 100m at 20°C
Connector type	RJ45
Certificates	UL, CE

POWER BUS CABLE



Conductive material	100% polished copper Class 5
Type	Stranded
Gauge	15AWG (1.50 mm ²)
Insulation material	LSZH (Low Smoke Zero Halogen, Halogen free)
Resistance	13,3 ohms / 1000m at 20°C.
Maximum voltage allowed	1KVolts
Certificates	UL, CE

PE.CAB.D3/6/9 (Data cable of 3, 6, 9 m - of 10', 20', 30' lenght)

PART NUMBER

PART NUMBER

PE.CAB.P (Power cable)



COMMUNICATIONS NETWORK

ParkEyes system uses a communications network based on Cisco™ devices to ensure huge data bandwidth flow and improved balance of thousands of cameras working in harmony in the same network.

Different Cisco devices distributed across multiple levels are deployed, from the level of field elements to the control centre.

ParkEyes is the only camera-based guidance system with video surveillance and video recording from all cameras, whatever the size of the project. This feature

allows having images of all cameras in the control room at the same time in real time.

All ParkEyes devices (cameras, led displays, etc) are Ethernet based and managed using the one and only communications network.

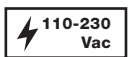
SPECIFICATIONS

SWITCH



Type	From switch layer 2 unmanaged to switch layer 3 managed
Ports	10/100/1000 (Gigabit)
Number of ports	Depending of project size
Backplane switching capacity	From 20 to 160 Gbps depending of project size

POWER



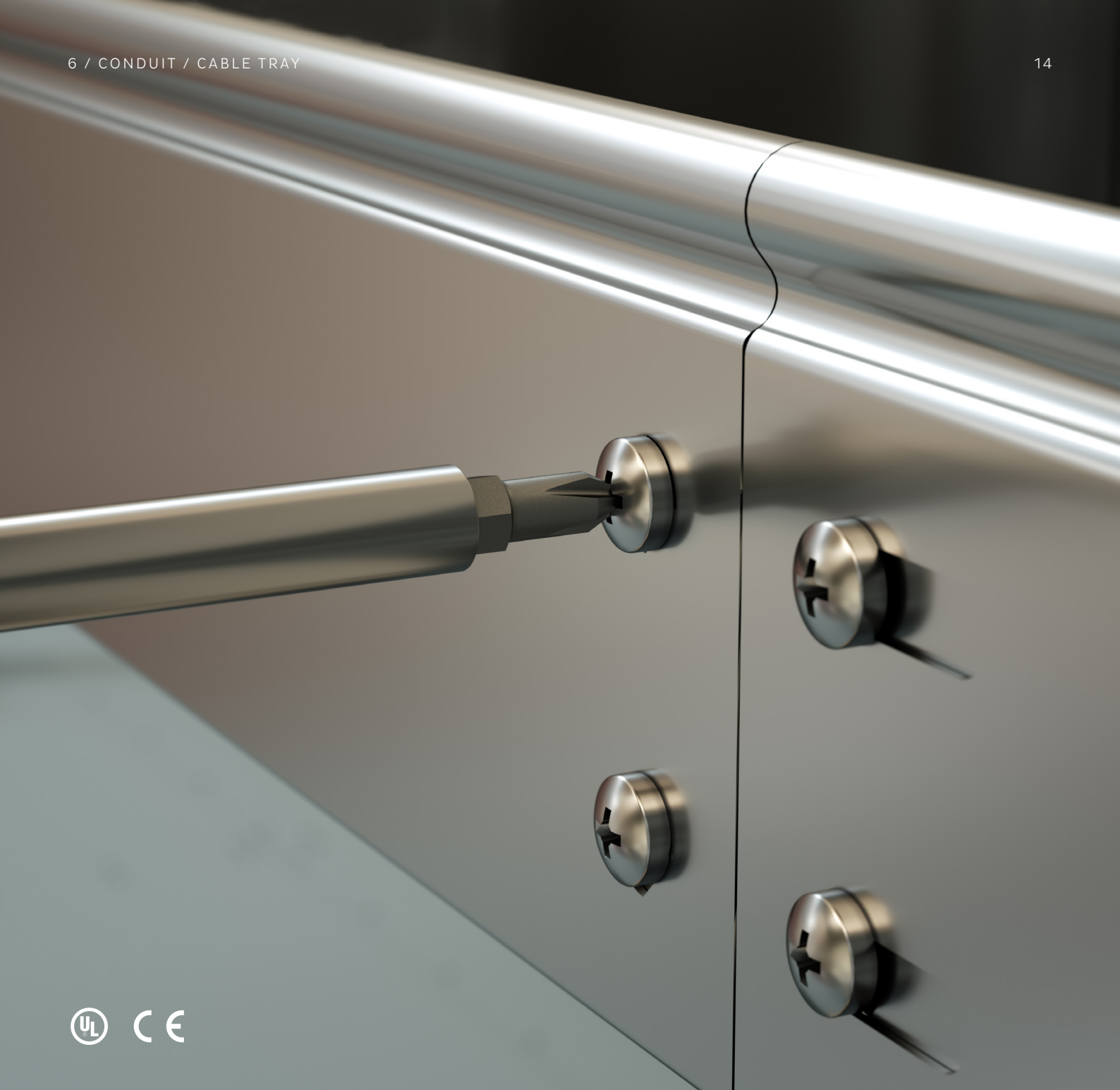
Power supply	110-230Vac
--------------	------------

CERTIFICATES



Directives	UL (UL 60950), CSA (CSA 22.2), CE, FCC Part 15 (CFR 47) Class A
Standards	IEEE 802.3 10BASE-T Ethernet, IEEE 802.3u 100BASE-TX Fast Ethernet, IEEE 802.3ab 1000BASE-T Gigabit Ethernet, IEEE 802.3ad LACP, IEEE 802.3z Gigabit Ethernet, IEEE 802.3x flow control, IEEE 802.1D (STP, GARP y GVRP), IEEE 802.1Q/p VLAN, IEEE 802.1w RSTP, IEEE 802.1s STP, IEEE 802.1X, IEEE 802.3af, IEEE 802.3at.

PART NUMBER
PE.SWI



CONDUIT / CABLE TRAY

ParkEyes system uses a cable tray to hold all cables and camera units. A “C” hanger speeds up the installation time since the cable is not needed to be stitched in each hanger, **only drop and run.**

SPECIFICATIONS

MATERIAL

Material	Galvanized steel
Surface protection and resistance to corrosion	Galvanized Sendzimir in compliance with UNE-EN 10142 standard. Class 3 protection in compliance with UNE-EN 61537 product standard. Zinc protection adequate for indoor installations
Optional	Hot-dipped galvanized in compliance with UNE-EN ISO 1461. Class 7 protection. Appropriate for outdoor installations and aggressive environments.

TECHNICAL CHARACTERISTICS



Impact resistance	System with impact resistance of up to 20J
Electrical Continuity	The system provides electrical continuity, in compliance with UNE-EN 61537, that ensures equipotential connection
Fire performance	Completely free of fire-related risks, fire spreading risks, toxic or opaque emission. Classified as non-flammable, M0 according to the Basic Building Standard NBE-CPI/96 and as A1 according to the Technical Building Code

MECHANICAL



60 x 60 x 300

Dimensions (Height, Width, Length)	60 mm (2.36"), 60 mm (2.36"), 300 mm (10' ft)
------------------------------------	---

CERTIFICATES



Directives	UL, CE mark in compliance with Low Voltage Directive 006/95 CE. Compliance with EN-61537 standard
------------	--



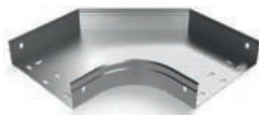
Standard(s) for Safety	NFPA 70, NEMA VE1 METAL CABLE TRAY SYSTEMS
------------------------	--

RoHS	CrVI -free finish in compliance with Directive 2002/95/CE RoHS
------	--

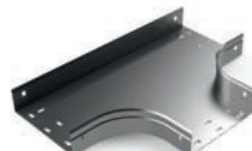
ACCESSORIES



PART NUMBER
PE.BAN.H
("C" hanger)



PART NUMBER
PE.BAN.45
(45° curve)



PART NUMBER
PE.BAN.T
("T" branch)



PART NUMBER
PE.BAN.CR
(Cross branch)

PART NUMBER
PE.BAN.CT (Cable tray of 3 m - 10' length)



POWER SUPPLY CABINET

ParkEyes completely runs under low voltage. All devices are connected to the same power bus.

ParkEyes features **industrial temperature range** for main power supplies.

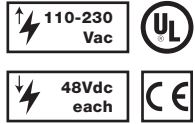
Entire power network is oversized up to 30%.

ParkEyes BUS Power supply meets with low voltage safety directives.

Up to 600 parking spaces and all related devices can be powered with only one cabinet.

SPECIFICATIONS

POWER



Power supply input	110-230Vac
Power output	Up to 6 x 240W, 48Vdc each
Certificates	UL, CE

ENVIRONMENT



Working temperature	Industrial range -30°C to +60°C (-22°F to +140°F)
IP rating	IP54 rated (against water and dust)

MECHANICAL



Internal mounting	DIN Rail power supplies
Cabinet mounting	Wall mounting cabinet
Material	Polycarbonate / ABS plastic
Dimensions (Height, Width, Depth)	610 mm (24.0"), 448 mm (17.6"), 160 mm (6.3")
Weight	12.0 kg (26 lbs)

PART NUMBER
PE.PSC



INDOOR SIGNALING LED DISPLAY

Indoor Led Display featuring 3 digits, direction arrow and handicapped symbol to guide drivers to available spaces.

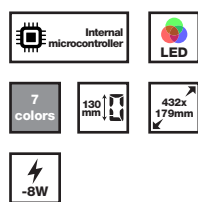
Unique Led Display for car park guidance with multi-message function. Each display can show up to 4 different messages alternately each X seconds (configurable). This feature is very useful in an intersection of corridors, since only one display is needed instead of two or more, as in traditional panels.

Made with RGB high brightness LEDs. 7 configurable colors are available.

Power over Ethernet (PoE) for easy plug and play.

SPECIFICATIONS

LED DISPLAY



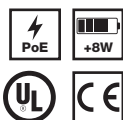
Features	3 digits + arrow (four directions: up, down, right, left) + handicapped symbol. Different configurations are available
Processor	Internal microcontroller
Technology	RGB Leds
Colors	7 available colors: red, green, blue, amber, light blue, violet and white
Characters height	130 mm (5.1")
Screen area	432 mm x 179 mm (17" x 7")
Special functions	Multi-message function. For example: standard free spaces in 3 directions + handicapped free spaces in 3 directions
Low Power consumption	Less than 8W for whole unit

INTERFACES



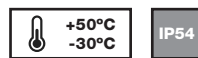
Connectors	One and only RJ45 Standard connector. No more connectors needed
Protocol	TCP/IP

POWER



Power supply	PoE (Power Over Ethernet)
Power consumption	8W maximum
Certificates	UL, CE

ENVIRONMENT



Working Temperature	-30°C to +50°C (-22°F to +122°F)
IP rating	IP54 rated (against water and dust)

MECHANICAL



Mounting	2 x M8 threaded inserts on top
Cabinet	Rear door with key for easy maintenance
Material	Polycarbonate/ABS plastic + powder coated steel
Dimensions (Width, Height, Depth)	484 mm (19"), 224 mm (8.8"), 100 mm (3.94")
Weight	4.6 kg (10 lbs)

PART NUMBER
PE.PMI.IND



OUTDOOR LED DISPLAY DIRECTORY

Outdoor Led Display Directory able to guide drivers to available spaces in each level.

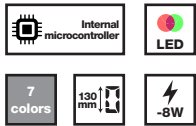
Customized design depending on each project requirement.

Power over Ethernet (PoE) for easy plug and play.

Made with Red/Green high brightness LEDs. RGB leds are optional.

SPECIFICATIONS

LED DISPLAY



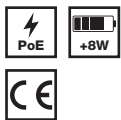
Features	3 digits per row. Optional: number of rows needed
Processor	Internal microcontroller
Technology	Red/Green high brightness leds. Optional: RGB Leds with 7 colors: red, green, blue, amber, light blue, violet and white
Characters height	130 mm (5.1")
Low Power consumption	Less than 8W each row

INTERFACES



Connectors	One and only RJ45 Standard connector. No more connectors needed
Protocol	TCP/IP

POWER



Power supply	PoE (Power Over Ethernet)
Power consumption	8W maximum per each row
Certificates	CE

ENVIRONMENT



Working Temperature	-30°C to +50°C (-22°F to +122°F)
IP rating	IP54 rated (against water and dust)

MECHANICAL



Mounting	2 x M8 threaded inserts on top, lateral side or bottom side
Cabinet	Rear door with key for easy maintenance
Material	Polycarbonate/ABS plastic + powder coated steel
Dimensions	depending on final design and number of rows required
Weight	depending on final design and number of rows required

PART NUMBER
PE.PMI.EXT.SSX (x = number of rows)

ParkEyes

Total Parking Control