



de zwarte hond
architecture urbanism strategy

DZH
DZH
DZH

de zwarte hond
architecture urbanism strategy

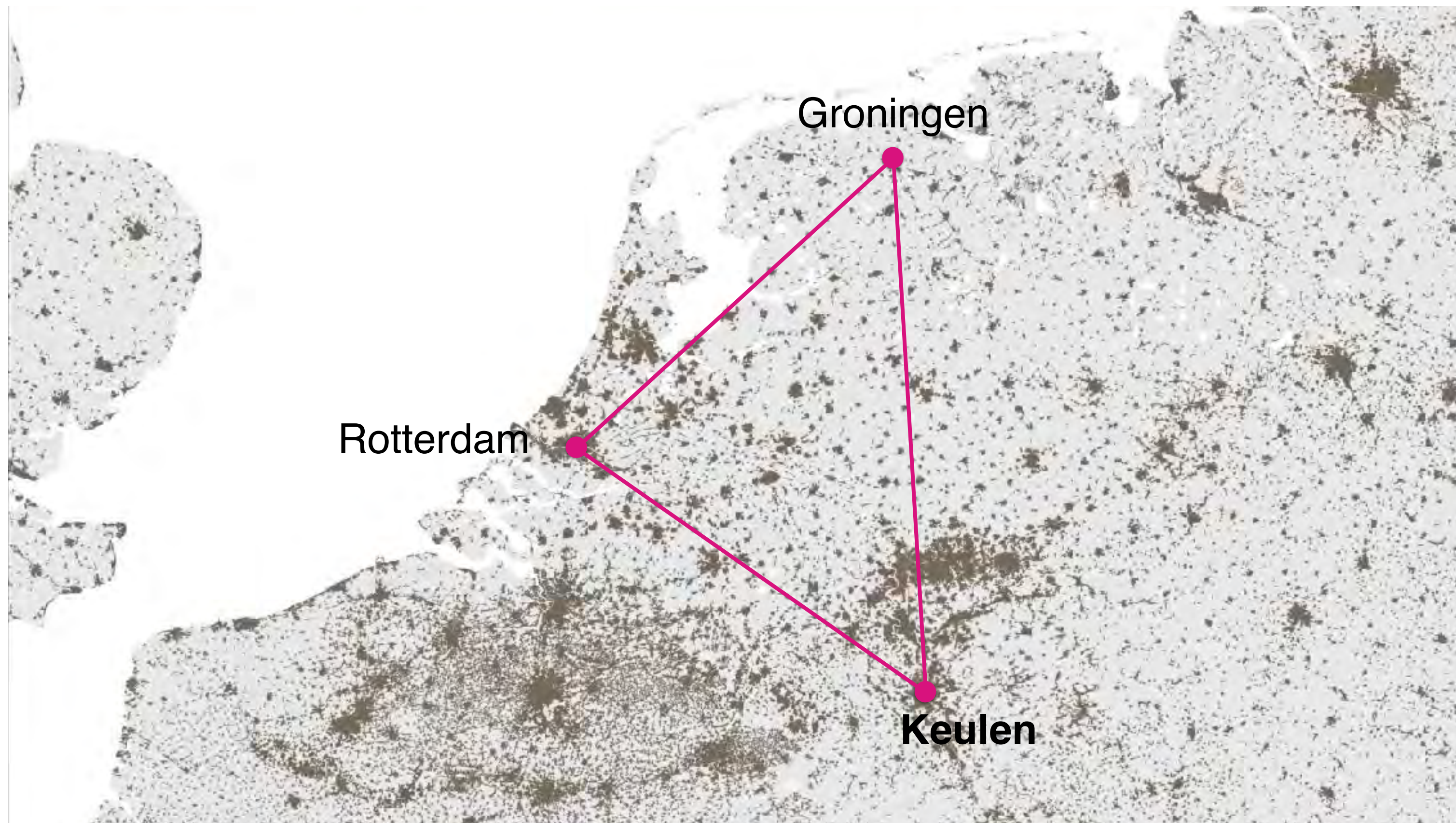
Parkeren is bijzaak

What we can learn from Groningen

2 FEBRUARI 2023

De Zwarte Hond

Groningen - Cologne - Rotterdam



partners



Ellen Schindler
CEO | Partner



Jeroen de Willigen
Creative Director | Partner



Eric van Keulen
Business Director | Partner



Jurjen van der Meer
Oprichter | Partner



Bart van Kampen
Architect | Partner



Daan Zandbelt
Urban Designer | Architect | Partner



Erik Roerdink
Architect | Partner



Henk Stadens
Architect | Partner



Matthias Rottmann
Urban Designer | Architect | Partner



Lisa van der Slot
Architect | Associate Partner



Bart van Leeuwen
Urban Designer | Associate Partner

De Zwarte Hond

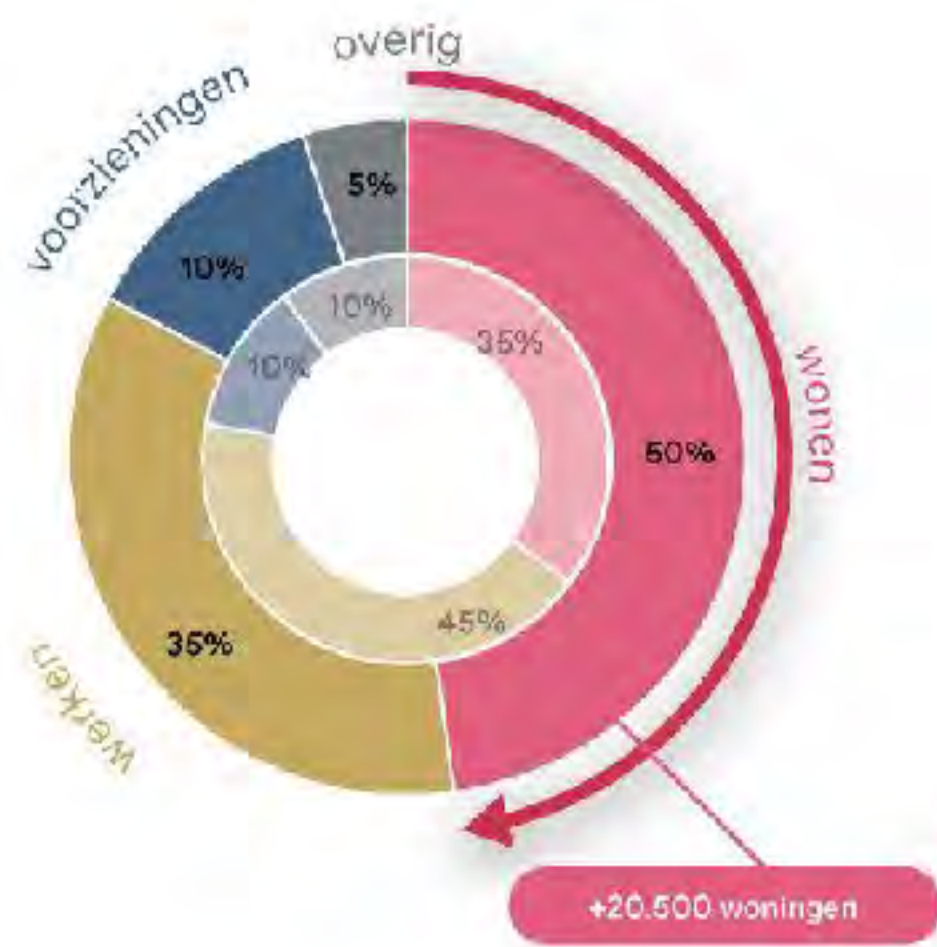
Architecture - Urbanism - Strategy



Design guide public space, Groningen

Manual for an inclusive public realm





	nu	toekomst obv verbeelding CID
BVO	3 miljoen m ²	5,4 miljoen m ²
Gemiddelde bouwhoogte	5 verdiepingen	9 verdiepingen
Groen	25 ha.	40,5 ha.
Groen / wo.	15 m ²	11 m ²
Water	10 ha.	10 ha.
Verhard	105 ha.	92,5 ha.

CID programmatische ambities



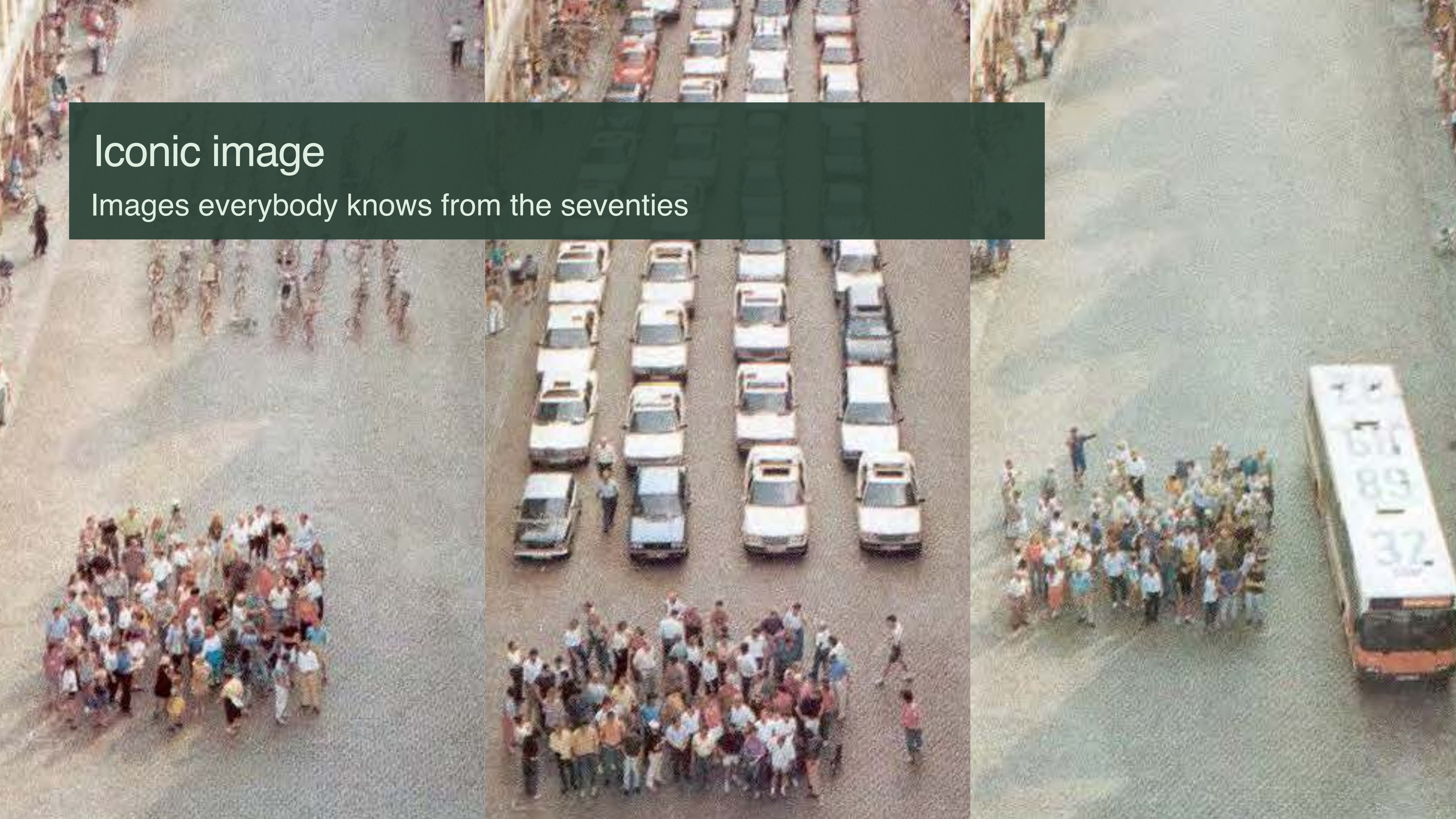


De Zwarte Hond was raised in Groningen and raised Groningen

De Zwarte Hond helped Groningen with their architecture, urbanism and strategy to become one of the most attractive and progressive cities of the Netherlands.

Iconic image

Images everybody knows from the seventies



Public space

Space for experience



Public space
Space for interaction



Public space

Space to move



Public space

Space for cars



Maire and aldermen 1972

Progressive and leftwing government, times ahead with focus on life quality and inclusiveness



Goals set for the inner-city of Groningen

"The proper functioning of the city center requires that it can be visited by large numbers of people at all times. Not all means of transport also have to penetrate into the city center".

"Accepting the car means not that he is given free rein, resulting in wide traffic lanes and extensive parking facilities. In relation to the number of visitors he transports, the car turns out to be a space-consuming monster. "

Traffic management plan 1977



The city of Groningen, the Netherlands, introduced the Traffic Circulation Plan (Verkeerscirculatie-plan, VCP) in 1977, dividing its inner city into four sectors for cars by enforcing one-way restrictions throughout the inner city. It reduced car traffic in the inner city by half, improving the environment there, and revitalized the city centre.

Vismarkt

1968 - 2015



Theater Zuidplein | Rotterdam



Ellenerhof | Bremen

Zuiderdiep

1968 - 2015



Theater Zuidplein | Rotterdam



Ellenerhof | Bremen

Brugstraat

2015 - 2018



Theater Zuidplein | Rotterdam



Ellenerhof | Bremen

Redesign for climate adaptation

Masterplan: “ruimte voor ruimte” 1992.





Grote Markt

2020 - 2025



Theater Zuidplein | Rotterdam



Ellenerhof | Bremen

De Grote Markt

Trees on the main square, Vogt Landscape in collaboration with Peetersen Daan



A-Kerkhof

Design by Anouk Vogel





..is voor iedereen

- Coalitieakkoord
- The Next City
- Sport- en bewegvisie



..is veilig

- Mobiliteitsvisie
- Coalitieakkoord



..stimuleert de beleving

- Coalitieakkoord
- The Next City
- Sport- en bewegvisie



..is een gezonde omgeving

- Coalitieakkoord
- Vitamine G
- G6 voor een gezonde stad Gro.
- Sport- en bewegvisie



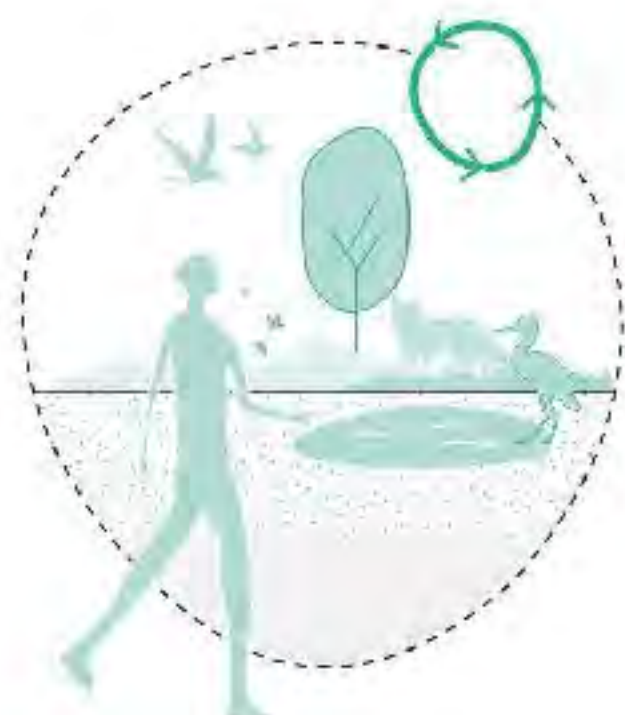
..is openbaar domein

- Coalitieakkoord
- G6 voor een gezonde stad Gro.
- Sport- en bewegvisie



..heeft mobiliteit op maat

- Mobiliteitsvisie
- Parkeervisie
- G6 voor een gezonde stad Gro.



..is een ecosysteem

- Vitamine G
- Coalitieakkoord
- The Next City



..is klimaatadaptief

- The Next City
- Coalitieakkoord
- Vitamine G
- Klimaatbestendig Groningen



..creëert waarde

- Coalitieakkoord
- The Next City



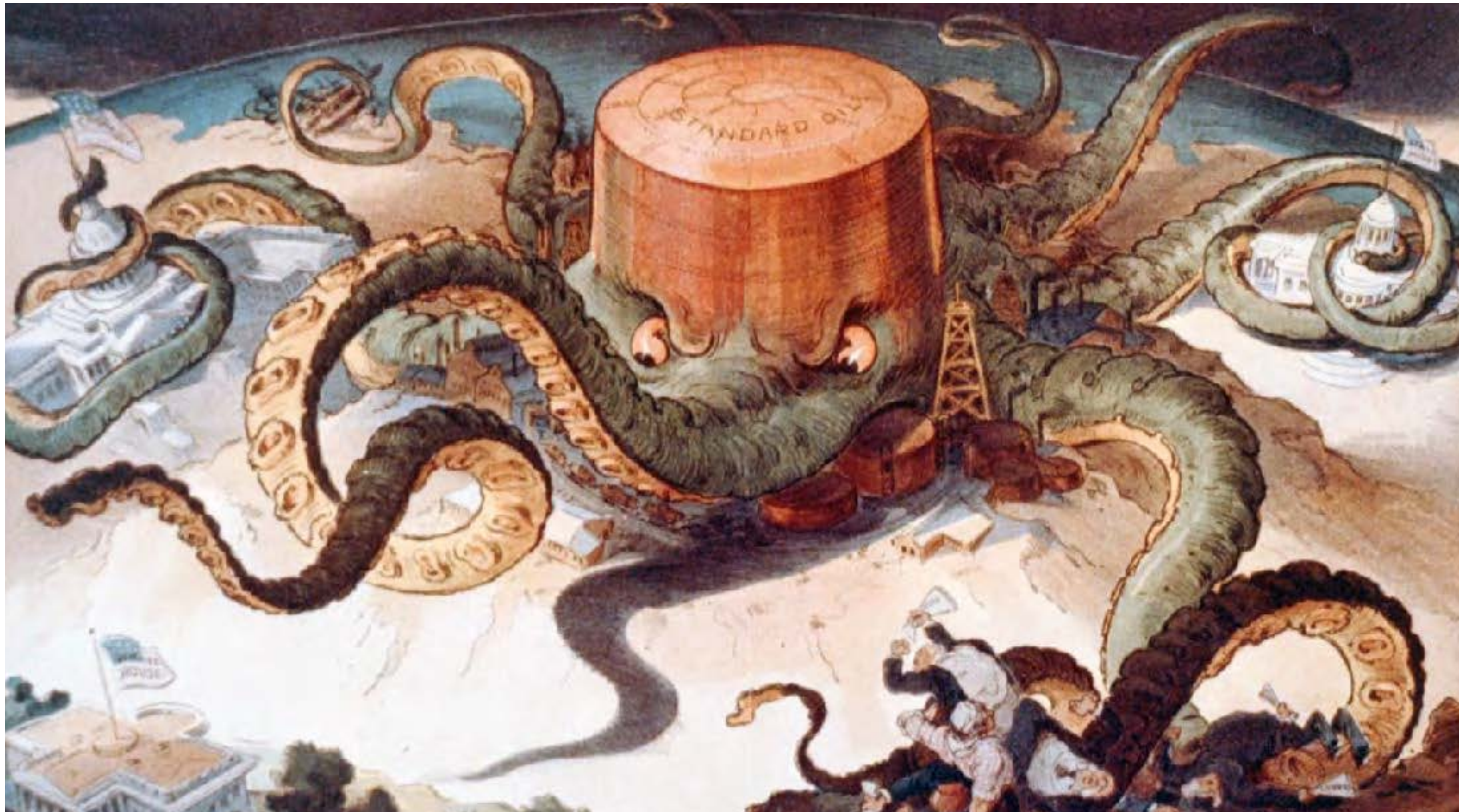
..heeft een identiteit

- Vitamine G
- Coalitieakkoord
- Cultuurnota

Compact

De kaart werd in de 20e eeuw getekend door de olie

Stedenbouw en planning was gebaseerd op de auto



Eggs of Cedric Price.

In the Ovo Urban Analogy: 'the city as an egg' (1982) of Cedric Price, Groningen is still a fried egg.



Compact City

Facilities, Retail, Hospitality, Administration, University, Hospital.



15-minute city

The mayor of Paris, Anne Hidalgo, introduced the challenging and innovative concept that would make the capital a fifteen-minute city, “la Ville des proximités”. The idea is to create neighbourhoods where every essential residents’ needs are easily within reach in 15 minutes by bike or walking. Simultaneously, the pandemic and COVID-19 crisis have completely transformed citizens’ lifestyles and our current context may increase the urgency of establishing this model.

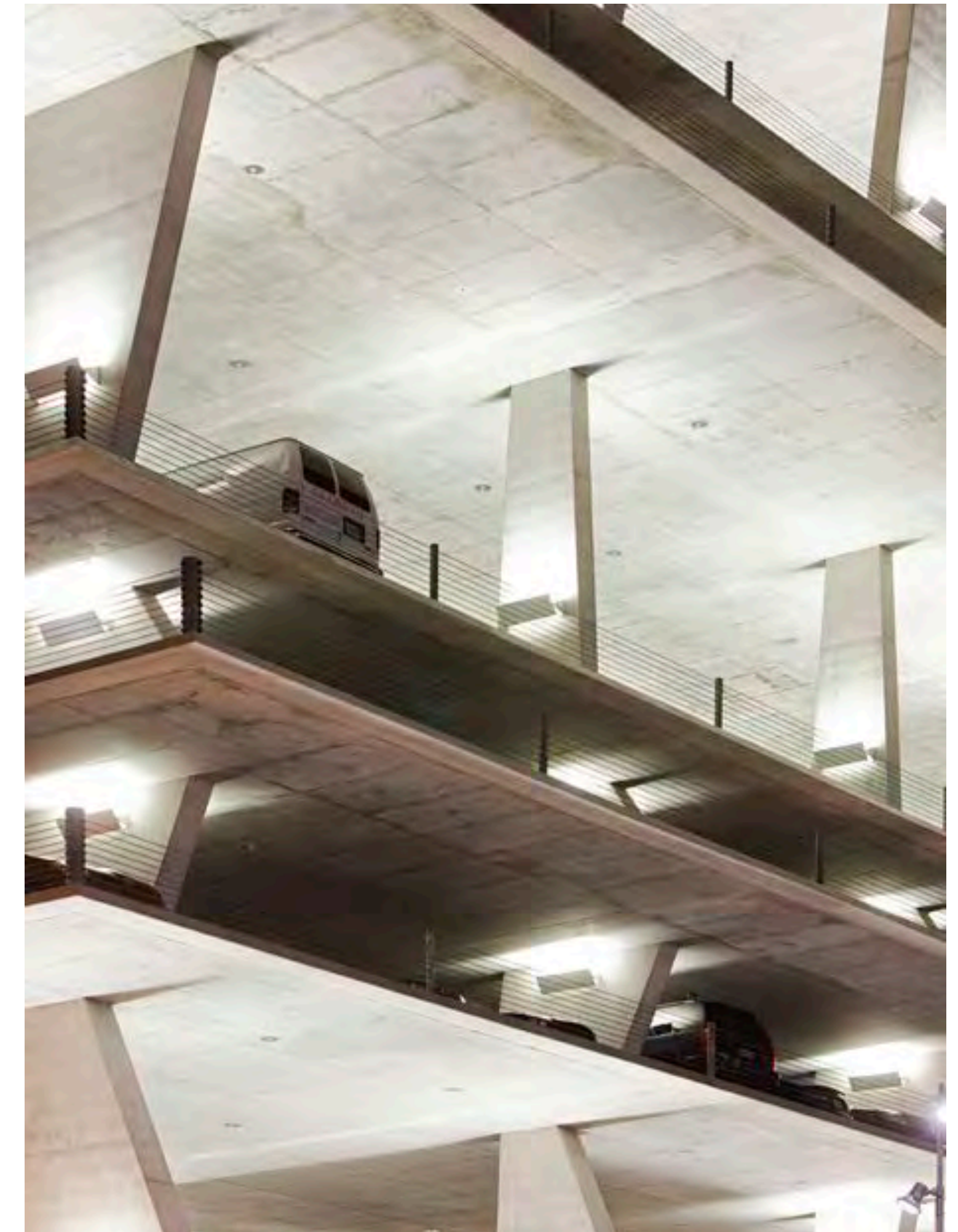
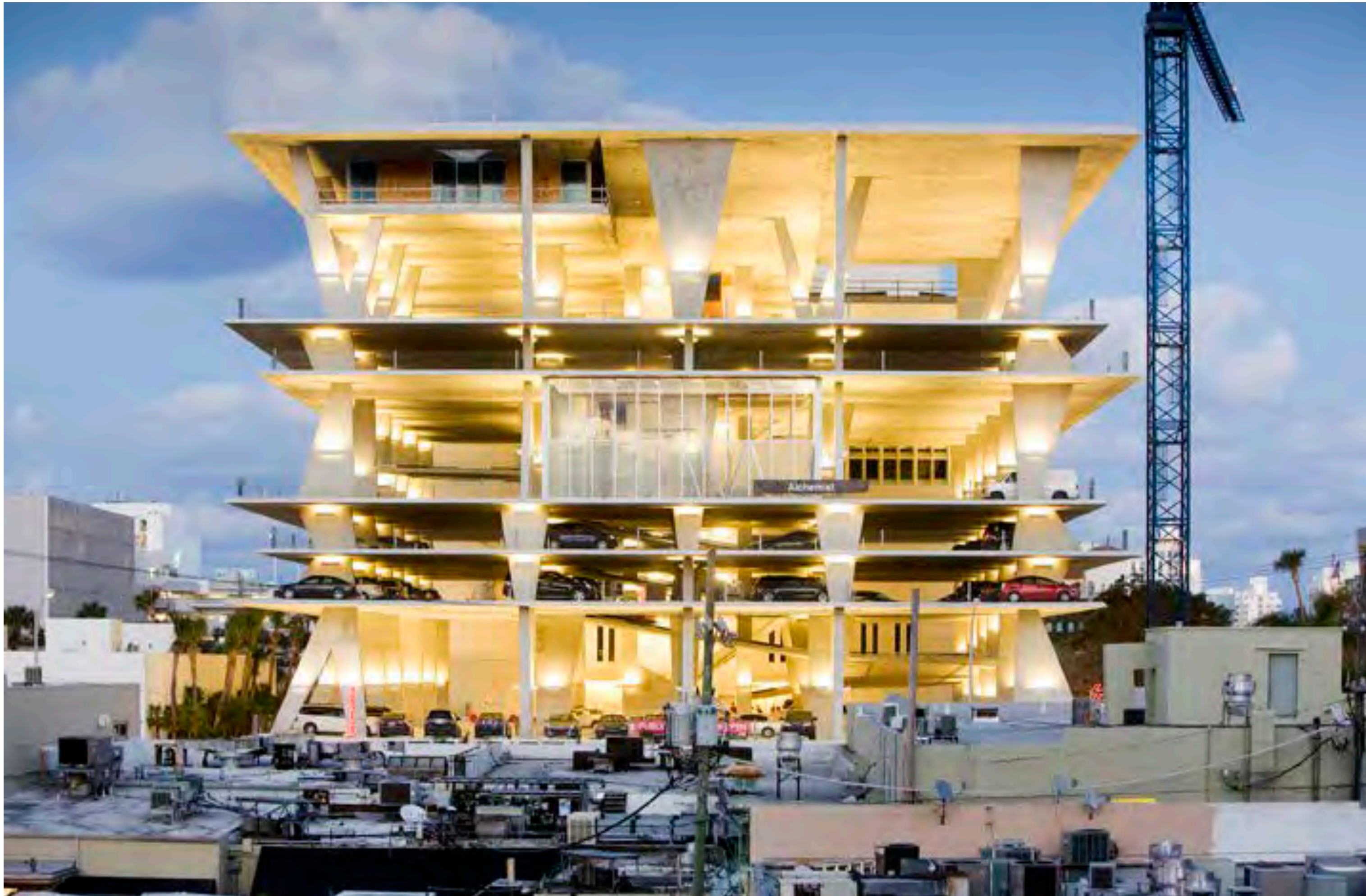


Is it now the best moment to invest in the restructuring of a city like Paris? Is the 15-minute city a key concept for the resilience of the capital? Will this green urban planning avoid economic disaster and help sustainability and development? Throughout this session, we'll be addressing these issues with Anne Hidalgo and Carlos Moreno, the French academic and Sorbonne professor who came up with this revolutionary fifteen-minute concept.



Parkeren is bijzaak

Carpark, restaurants, gallerias by Herzog & de Meuron, Miami



Carpark, playground, JAJA architects, Copenhagen



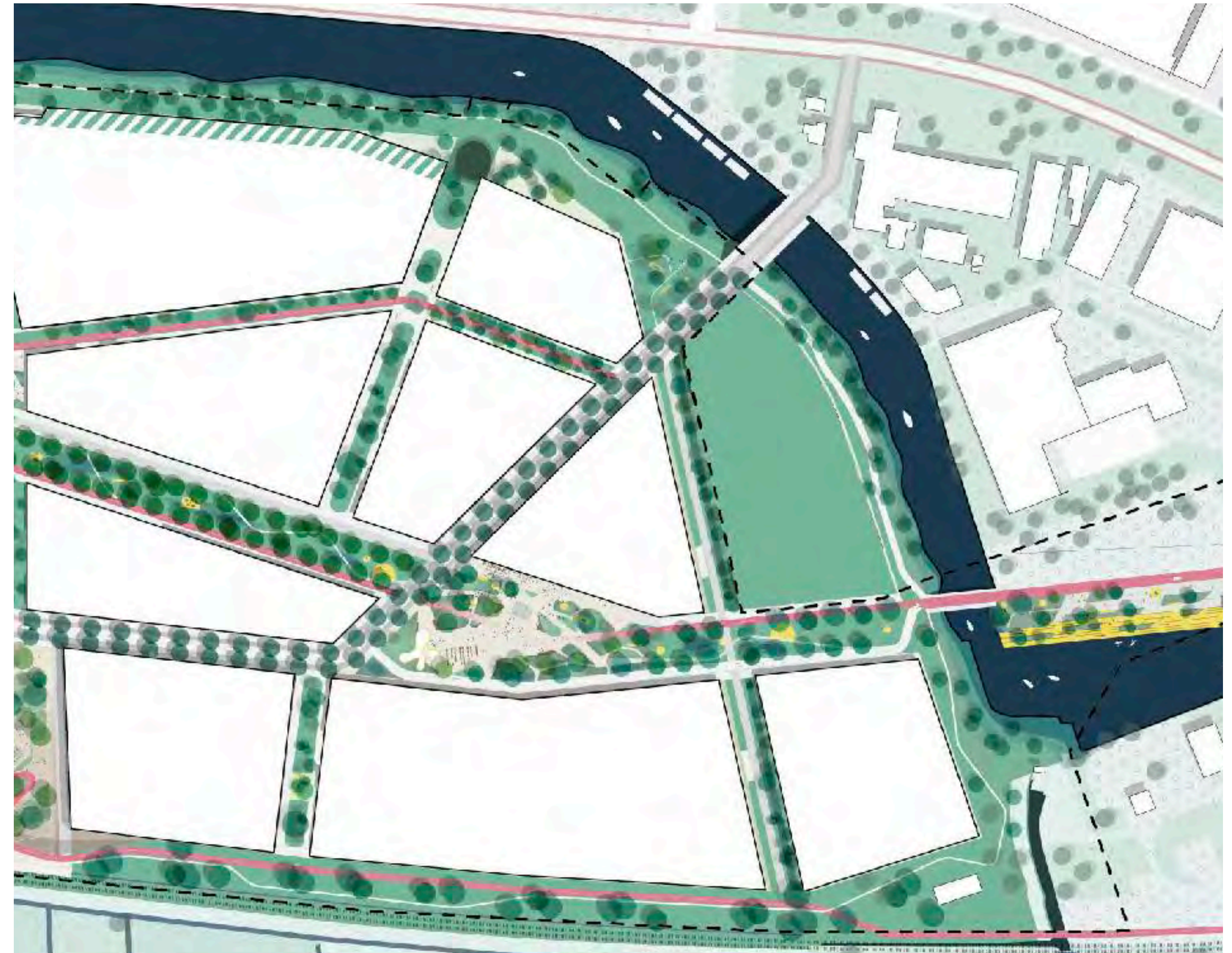
Parkeerhub, Fietsenmaker, Cruyffcourt, Pijnacker



Suikerzijde, Groningen



Suikerzijde, Groningen





Parkeerhub waalsprong, KorthTielens architecten



Parkeerhub waalsprong, KorthTielens architecten





Hofman
BAKERS

Hofman
BAKERS

Etos

Etos

The most beautiful hub in the world



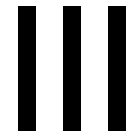
I



Supermarket, cafe and servicehub



School, library or community centre

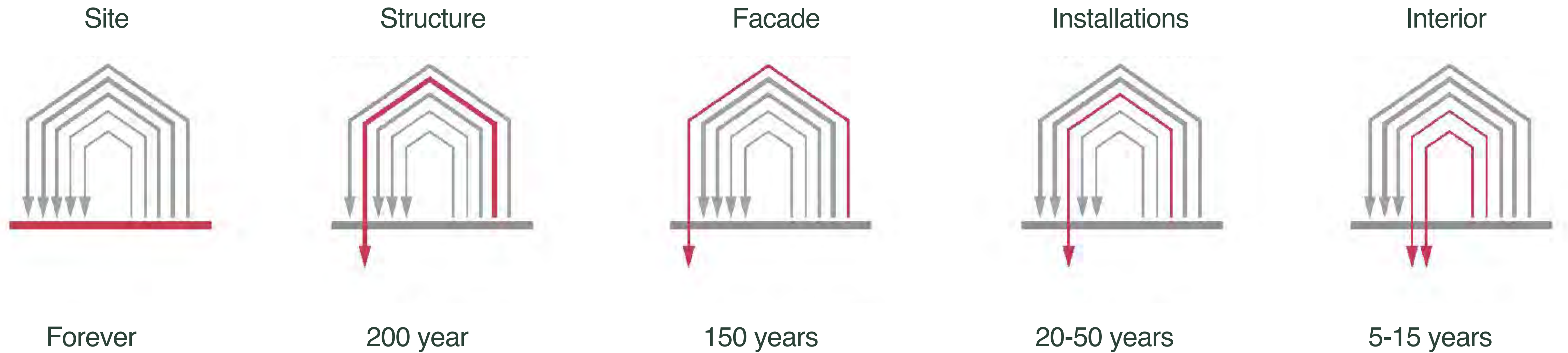


Healthcare center, gym or theatre

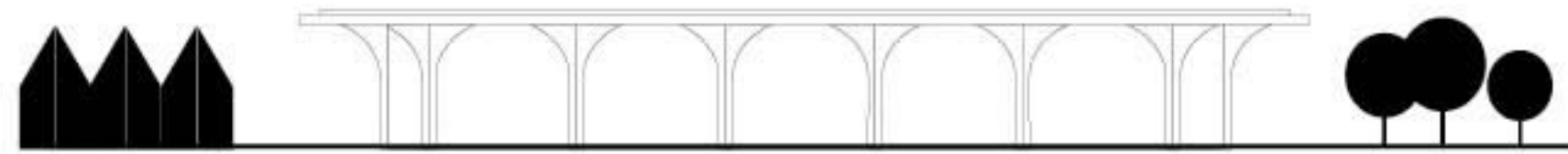
The amount of captured CO2



S-layers



Site



forever



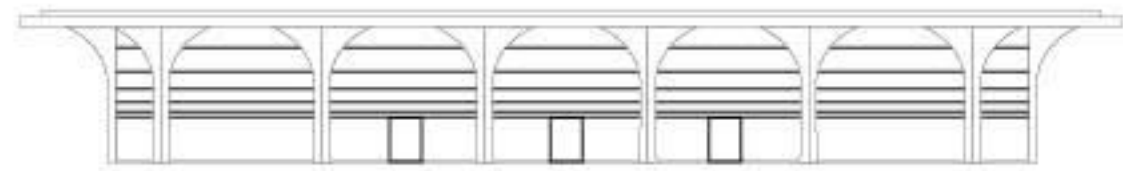
Structure



200 year



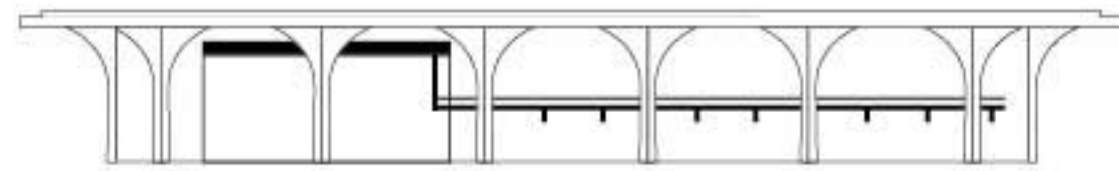
Facade



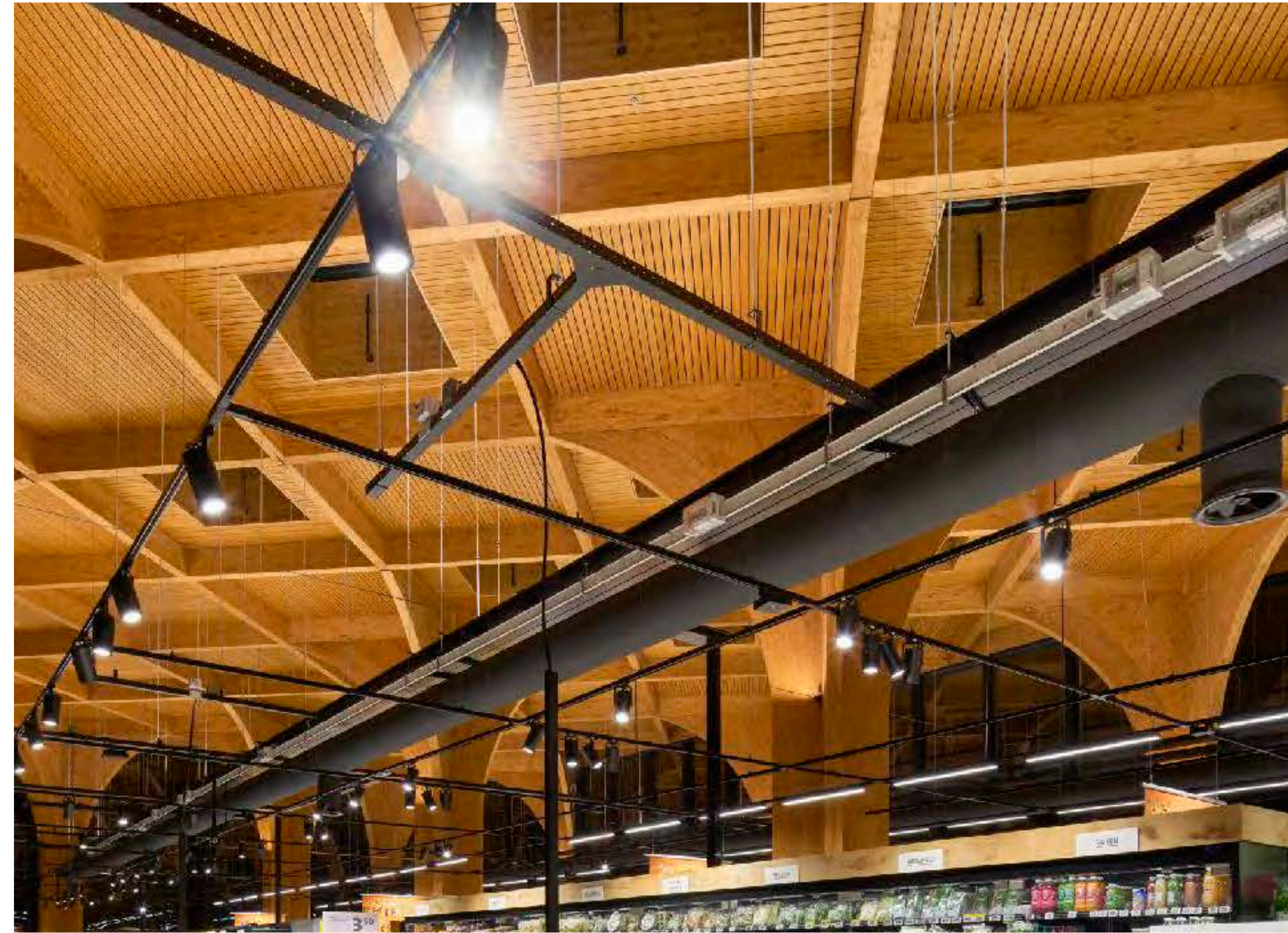
150 years



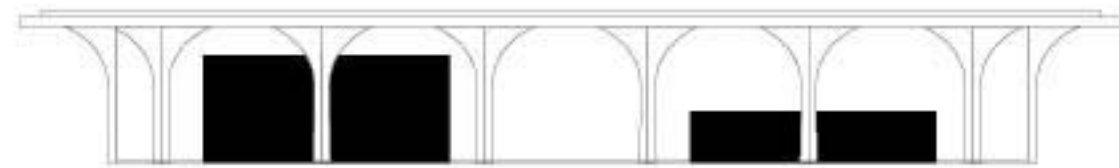
Installations



20-50 years



Interior



5-15 years





THANKS